

MOULE LONG (fully mounted in the workshop)

IN DETAILS

- Gross area = 30,8m²
- Length: 8,6m
- Width: 3,5m
- Height: 3,73m
- Option: Tarrace 8m²

 SIZE 30,8 M2

 PERSON 2

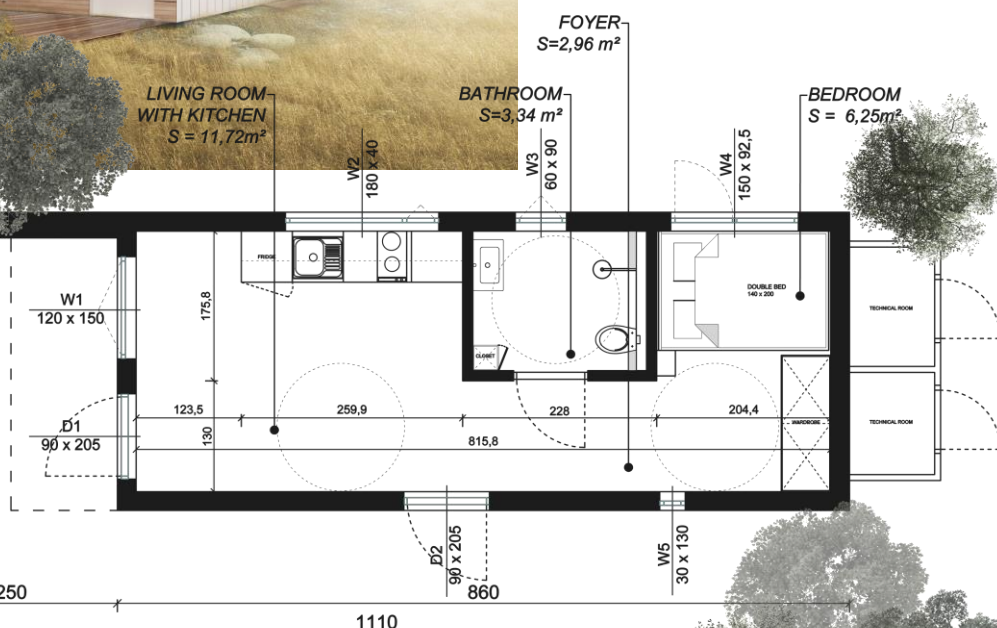


FLOOR

- Rain membrane
- OSB3 board 8mm
- Wooden joists 60 x 120mm + steel beams
- Mineral wool insulation 120mm
- CLT open panel 160mm filled with mineral wool insulation
- Floor screed with underfloor heating
- Vapour barrier
- Vinyl flooring on underlay, tiles in bathroom

ROOF

- Roofing sheet
- Battens 40 x 60mm
- Counter-battens 25 x 50mm
- Breathable roofing underlay
- Mineral wool insulation 200mm
- CLT open panel 227mm filled with mineral wool insulation
- 2 layers of wood protector
- Steel flashings



WALLS

- HPL cladding 6mm
- Substructure 115mm
- Mineral wool insulation 100mm
- Wind membrane
- CLT solid structure 84mm

DOORS AND WINDOWS

Entrance doors in steel and windows in wood/aluminium.

ELECTRICITY AND PLUMBING

Complete electrical and hydraulic installations (depending on version equipment). Lighting included.

EQUIPMENT

- Kitchen furniture
- Bathroom equipment