

**BIG PREFAB** (ground floor)

**IN DETAILS**

- Gross area = 72,6m<sup>2</sup>
- Usable area: 53,44m<sup>2</sup>  
(1st and 2nd floor)
- Length: 9,33m
- Width: 4,55m
- Height: 6,79m



SIZE 72,6 M2



PERSON 3 / 6



**WALLS**

- Saturator treatment
- Spruce openwork cladding 20 x 110mm
- Spacers 40 x 50mm
- Counter batten 10 x 40mm
- Wind membrane
- OSB3 board 12mm
- Wooden structure 60 x 180mm + mineral wool insulation 150mm
- Vapour barrier
- OSB3 board 12mm
- Plasterboard 12,5mm / Wood paneling spruce 12mm
- 2 layers of acrylic paint / 2 layers of wood protector



**ROOF**

- Supporting wooden beams
- Waterproof membrane
- OSB3 board 12mm
- Wooden joists 60 x 160mm + mineral wool insulation 150mm
- Vapour barrier
- OSB3 board 22mm
- Laminate parquet on underlay, tiles in bathrooms



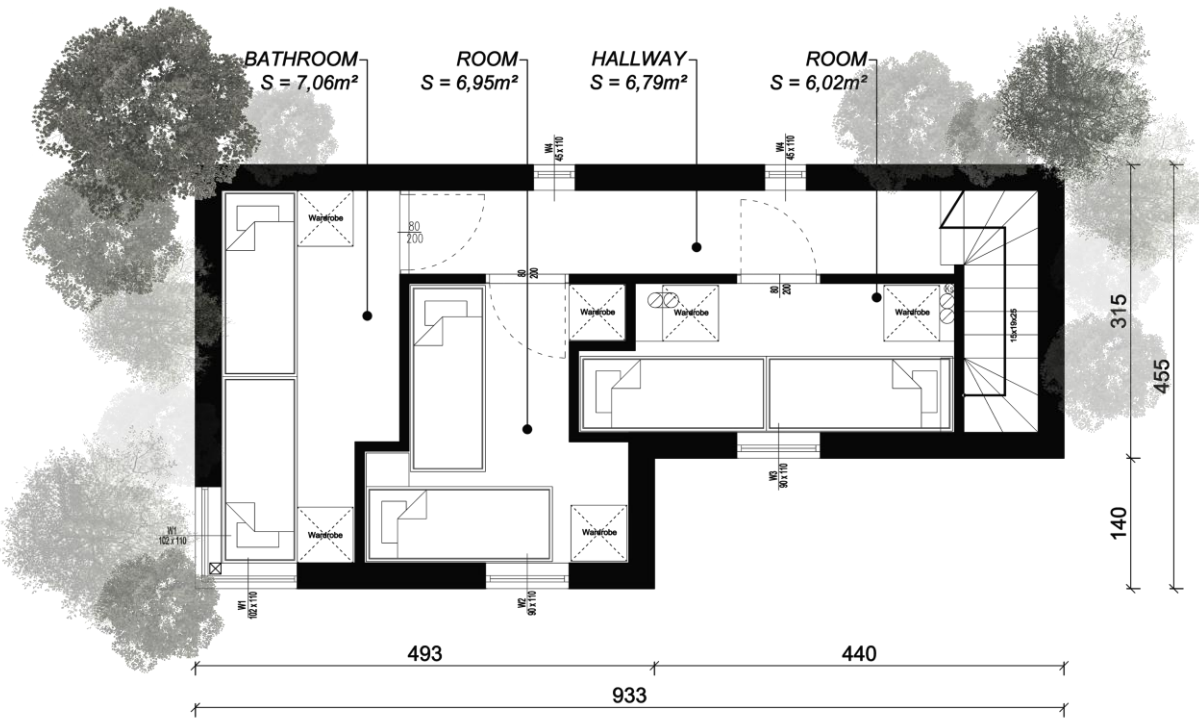
**UPPER FLOOR**

- 2 layers of roofing felt
- OSB3 board 22mm
- Rafters 60 x 220mm
- Mineral wool insulation 220mm
- Vapour barrier
- Battens 40mm
- Plasterboard 12,5mm / Wood paneling spruce 12mm
- 2 layers of acrylic paint / 2 layers of wood protector



- Steel frame
- Rain membrane
- OSB3 board 8mm
- Wooden joists 60 x 140mm + mineral wool insulation 100mm
- Vapour barrier
- OSB3 board 18mm
- Laminate parquet on underlay

**BIG PREFAB (upper floor)**



**DOORS AND WINDOWS**

Entrance door in steel.  
 Windows in PVC. Double glazing.

**ELECTRICITY  
AND PLUMBING**

Complete electrical and hydraulic installations (depending on version equipment)

**EQUIPMENT**

- Kitchen furniture
- Bathrooms equipment
- Water heater 200L
- Electric radiators